



1445 Education Way, Port Charlotte, FL 33948  
 941-255-0808  
 yourcharlotteschools.net

**Achieving Success at CCPS...**  
*District Recognitions and Highlights*

- ◆ Neil Armstrong Elementary, Sallie Jones Elementary, and Vineland Elementary Schools are Leader in Me Lighthouse Schools
- ◆ Port Charlotte High School was ranked a Silver School by U.S. News and World Reports in 2016
- ◆ The Lemon Bay High School Formula I Team participated in the first ever-electric car race in Miami, Florida in March 2015
- ◆ Port Charlotte High's Model UN Team is the only high school to have won every major competition in the east and have won some competitions multiple times
- ◆ Charlotte High Schools Robotics Team was part of the Winning Alliance (Same as State Champions) at the South Super Regional Championship in March 2017 and earned the right to compete in the World Championships
- ◆ Received state and national recognition for our arts programs, an essential part of our curriculum
- ◆ Empty Bowls was established in 2000 and has raised and provided over \$150,000 to local organizations to fight hunger and homelessness
- ◆ Charlotte High School's Mock Trial Team earned 1<sup>st</sup> place in the Twentieth Judicial Mock Trail Competition in 2017
- ◆ All 10 Elementary Schools earned the National Healthier U.S. School Challenge in 2016
- ◆ Wrote and received a Math and Science Partnership grant for \$420,191.58 to fund professional learning opportunities in STEM for our teachers
- ◆ Sallie Jones Elementary and Vineland Elementary Schools are designated as Exceeding Expectations Award Schools
- ◆ Designated an ENERGY Star Partner and have been awarded 37 ENERGY Star plaques for energy efficiency by the Environmental Protection Agency (EPA)
- ◆ 7 schools and 2 ancillary buildings have been recognized by the United States Green Building Council (USGBC) for their Leadership in Energy & Environmental Design (LEED)
- ◆ Our Purchasing Department has received the Procurement Award for the last 6 consecutive years
- ◆ Savings in energy cost of \$17,796,100 in the first 11 years of our energy conservation program

**Vision: *Student Success!***

*Mission:* To promote character and competence in a positive learning culture that ensures success and inspires purpose for ALL.

**SCHOOL BOARD**

- ◆ Lee Swift, District 1    ◆ Kim Amontree, District 2
- ◆ Bob Segur, District 3    ◆ Ian Vincent, District 4
- ◆ Wendy Atkinson, District 5

**Steve Dionisio, Superintendent**  
 ONE Voice. ONE Team. ONE Message.

**Schools**

Elementary Schools (three are year-round)	10
Middle Schools	4
High Schools	3
Centers	3
Technical College	1

*Student Population Total (PK-12)* 15,761

White: 70%, Black: 9%, Hispanic: 13.7%, Other: 6.6%

English Language Learners (ELL)	426
(includes 539 gifted students)	3450
Home school students	417
Homeless students	211
Students qualifying for free/reduced meals	59.3%

**Employees...**

*CCPS is the largest employer in Charlotte County*

Instructional	1,012
Instructional support (e.g., paraprofessionals, departments of transportation, food service)	893
School-based administrators	50
District administrators	21
Total	1,976

CCPS beginning teacher salary	\$38,200
CCPS average teacher salary	\$48,019

**Transportation**

85 buses transport students and travel approximately 1,700,000 miles annually  
 6300 students are transported daily  
 There are 1452 stops every morning and 1513 stops every afternoon

**Food Service**

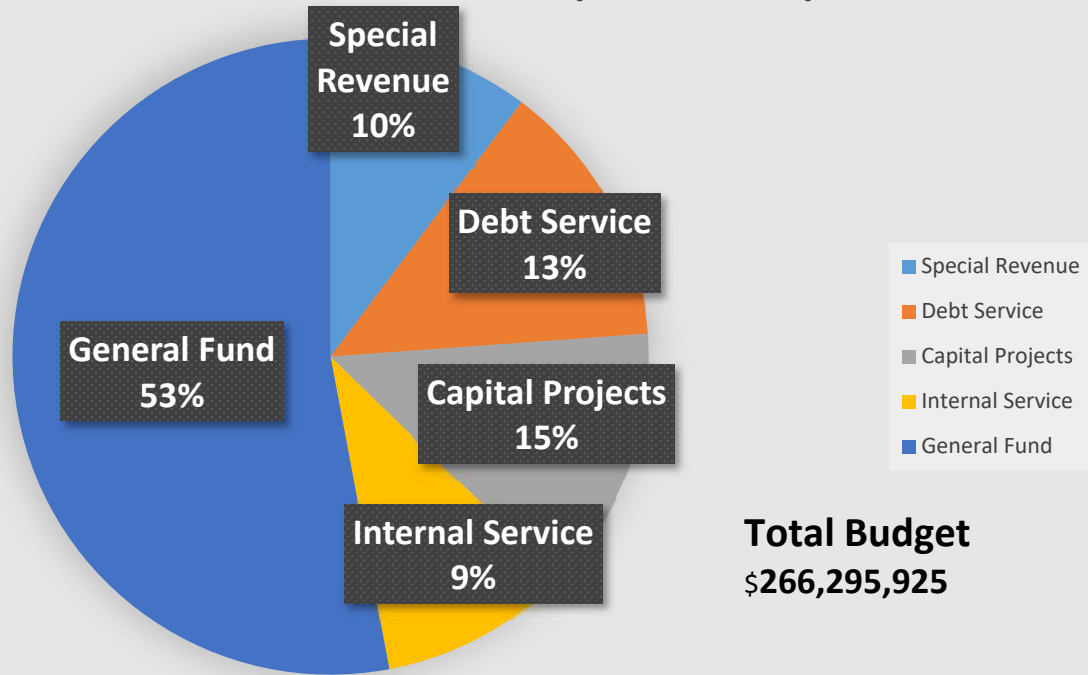
Approximately 10,800 lunches served each day  
 Approximately 4,850 breakfasts served each day  
 More than 2,800,000 meals served each year

**Maintenance and Operations**

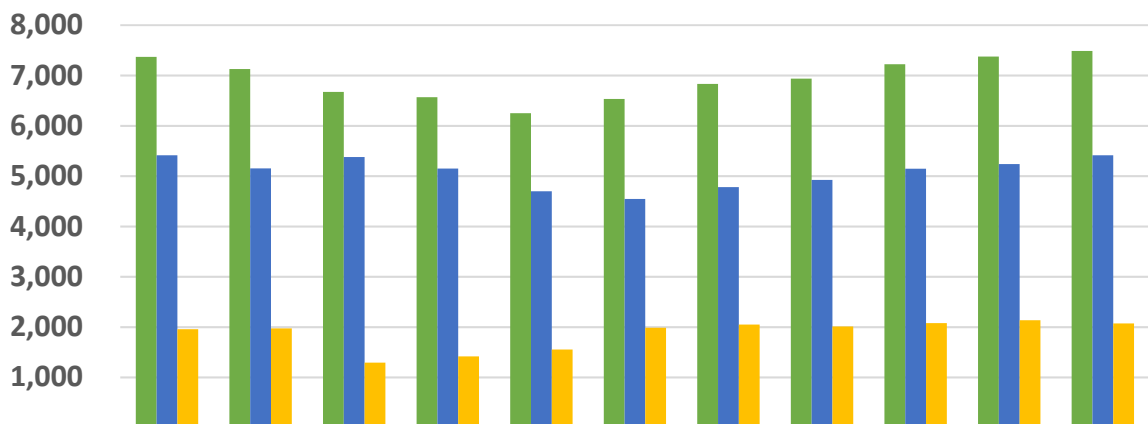
The team maintains approximately 3,207,142 square feet of educational facilities and 503 acres

2017-2018

## CHARLOTTE COUNTY PUBLIC SCHOOLS BUDGET SUMMARY (ALL FUNDS)



## Charlotte County Public Schools Historical Funding per UWFTE



	2007-08	2008-09	2009-10	2010-11	2011-12	2012-13	2013-14	2014-15	2015-16	2016-17	2017-18
Total \$ per UWFTE	7,369	7,127	6,673	6,568	6,251	6,532	6,831	6,936	7,223	7,374	7,486
Local \$ per UWFTE	5,412	5,154	5,378	5,150	4,698	4,546	4,780	4,925	5,145	5,239	5,413
State \$ per UWFTE	1,957	1,973	1,295	1,419	1,553	1,986	2,051	2,011	2,078	2,135	2,073

■ Total \$ per UWFTE   ■ Local \$ per UWFTE   ■ State \$ per UWFTE